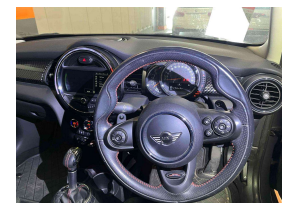
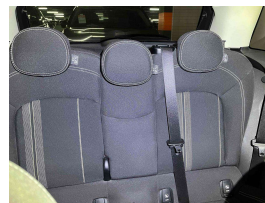
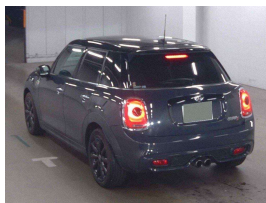




## A dark grey MINI Cooper is parked in a white room, viewed from the front quarter angle. The car is positioned on a light-colored floor with red and white markings. A person wearing a high-visibility vest is visible in the driver's seat. The car's headlights are on, and its license plate is obscured by a white box. The background is a plain white wall with a blue container visible in the distance.



## Buy Safe

Watch these items when purchasing your next car.

- Basic** – Check out the safety ratings for NHTSA's top 100 cars.
- Vehicle Theft** – Rating your car for theft is an effective deterrent against thieves.
- Insurance** – Check out the insurance rates for your car. A car with a high insurance rate may be a sign of a poor car.
- Warranty** – Check out the warranty for your car. A car with a long warranty may be a sign of a good car.
- Engine Oil** – Check out the engine oil for your car. A car with a high engine oil rate may be a sign of a poor car.
- Brakes** – Check out the brakes for your car. A car with a high brake rate may be a sign of a poor car.
- Transmission** – Check out the transmission for your car. A car with a high transmission rate may be a sign of a poor car.
- Exhaust** – Check out the exhaust for your car. A car with a high exhaust rate may be a sign of a poor car.
- Interior** – Check out the interior for your car. A car with a high interior rate may be a sign of a poor car.
- Exterior** – Check out the exterior for your car. A car with a high exterior rate may be a sign of a poor car.
- Engine Oil** – Check out the engine oil for your car. A car with a high engine oil rate may be a sign of a poor car.
- Brakes** – Check out the brakes for your car. A car with a high brake rate may be a sign of a poor car.
- Transmission** – Check out the transmission for your car. A car with a high transmission rate may be a sign of a poor car.
- Exhaust** – Check out the exhaust for your car. A car with a high exhaust rate may be a sign of a poor car.
- Interior** – Check out the interior for your car. A car with a high interior rate may be a sign of a poor car.
- Exterior** – Check out the exterior for your car. A car with a high exterior rate may be a sign of a poor car.

In transit.



**Scotty Duncan**  
For Finance  
+ Vehicle Consultant  
0800 22 44 02 EXTN 2  
022 071 2299  
scott@wcd.co.nz