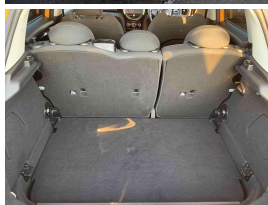
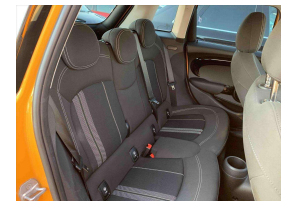
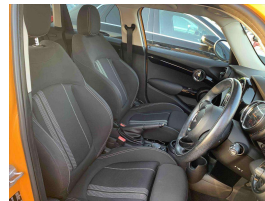
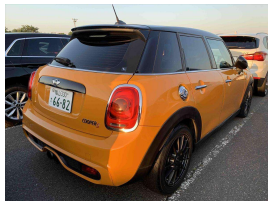




Wholesale Cars Direct

## 2016 BMW Mini Cooper S - Turbo Hot Hatch. \$18,990



<b>Stock ID</b>	16767
<b>Engine</b>	2000 cc
<b>Body</b>	Hatchback
<b>Odometer</b>	67,306 km
<b>Interior</b>	0
<b>Transmission</b>	Automatic

Welcome to Wholesale Cars Direct.  
WCD is quality, WCD is service, it is who we are.

This vehicle is in transit from Japan.  
As expected from Wholesale Cars Direct this vehicle will be as described when you enquire.  
WCD is renowned nationally for better presented vehicles for the most discerning of buyers.  
This vehicle can be secured prior to arrival subject to test drive/condition for one thousand dollars holding deposit.  
Save now, Buy now.



**AJ Hoare**  
Vehicle Consultant  
0800 22 44 02  
021 784 687  
aj@wcd.co.nz



**Scotty Duncan**  
For Finance  
+ Vehicle Consultant  
0800 22 44 02 EXTN 2  
022 071 2299  
scott@wcd.co.nz