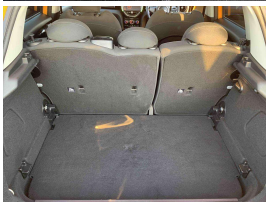
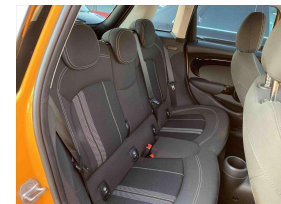
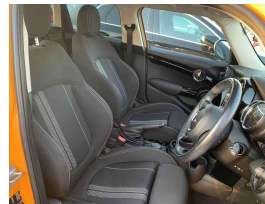
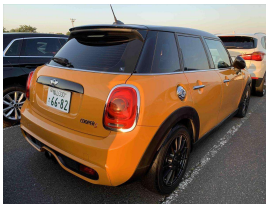




Wholesale Cars Direct

2016 BMW Mini Cooper S - Turbo Hot Hatch. \$19,990



Stock ID	16767
Engine	2000 cc
Body	Hatchback
Odometer	67,306 km
Interior	0
Transmission	Automatic

Welcome to Wholesale Cars Direct.
WCD is quality, WCD is service, it is who we are.

This vehicle is in transit from Japan.
As expected from Wholesale Cars Direct this vehicle will be as described when you enquire.
WCD is renowned nationally for better presented vehicles for the most discerning of buyers.
This vehicle can be secured prior to arrival subject to test drive/condition for one thousand dollars holding deposit.
Save now, Buy now.



AJ Hoare
Vehicle Consultant
0800 22 44 02
021 784 687
aj@wcd.co.nz



Scotty Duncan
For Finance
+ Vehicle Consultant
0800 22 44 02 EXTN 2
022 071 2299
scott@wcd.co.nz