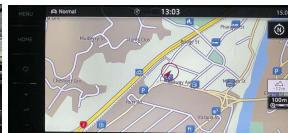
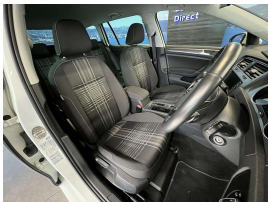
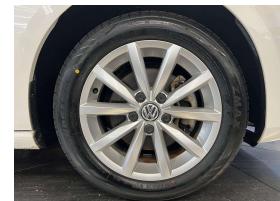
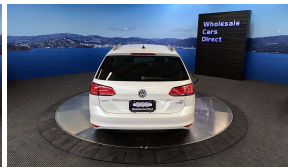
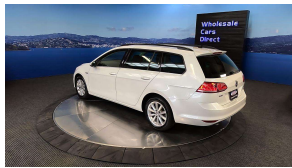
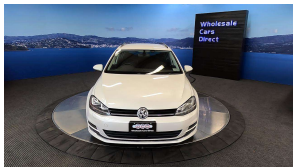




Wholesale Cars Direct

## 2015 Volkswagen Golf Special Estate - Grade 5 A - Sensationaly Tidy.



<b>Stock ID</b>	16826
<b>Engine</b>	1200 cc
<b>Body</b>	Station Wagon
<b>Odometer</b>	46,470 km
<b>Interior</b>	0
<b>Transmission</b>	Automatic

Welcome to Wholesale Cars Direct.  
WCD is quality, WCD is service, it is who we are.

Condition doesn't get better than this grade 5 A VW Golf estate. This grade is usually reserved for new cars. Comes with radar cruise control, Front assist, Driver alert system, Proactive occupant protection, Stereo upgraded to NZ spec, 9 airbags, 16 inch factory alloys with a brand new set of tyres fitted in NZ, Electronic stability program, Dual climate air conditioning, ISOFIX car seat anchor points, Auto headlights, Reverse camera, Bluetooth music streaming, Handsfree, We have also had NZ navigation installed, Multi function steering wheel with paddle shift tiptronic, We have also had NZ navigation installed.



**AJ Hoare**  
Vehicle Consultant  
0800 22 44 02  
021 784 687  
aj@wcd.co.nz



**Scotty Duncan**  
For Finance  
+ Vehicle Consultant  
0800 22 44 02 EXTN 2  
022 071 2299  
scott@wcd.co.nz